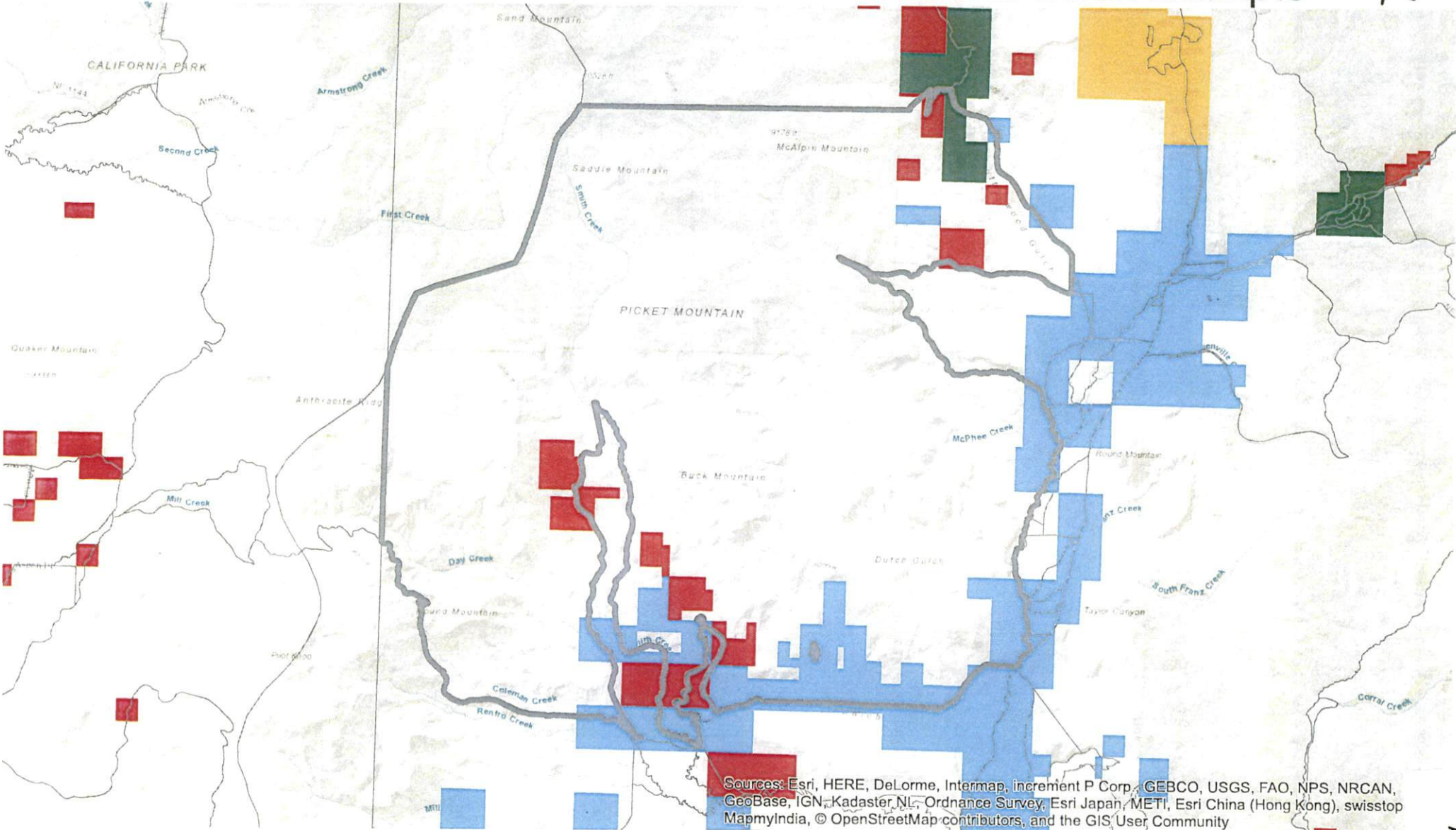


BROADBAND SERVICE IN COLORADO - Census Block Example

A



Sources: Esri, HERE, DeLorme, Intermap, increment P Corp., GEBCO, USGS, FAO, NPS, NRCAN, GeoBase, IGN, Kadaster NL, Ordnance Survey, Esri Japan, METI, Esri China (Hong Kong), swisstop, MapmyIndia, © OpenStreetMap contributors, and the GIS User Community



Legend

- Census Block Selection
- Census Blocks
- Service Level**
- Broadband Service
- Under 25 Mbps
- Under 10 Mbps
- No Service

Census Block Details:

County: Routt
 Service Level: Broadband Service
 Funding Awarded: Y
 Size: 42 Sq Mi

This map shows broadband service levels of populated areas in Colorado. Service is represented by Public Land Survey System (PLSS) Quarter-Quarter Sections, which are equal to 40-acre plots. Broadband is defined by the FCC as 25 Mbps download and 3 Mbps upload speed. The map also distinguishes service levels under 25 Mbps and under 10 Mbps.

0 0.75 1.5 3 Mi

N

Scale: 1:98,110



Data: Colorado Broadband Data and Development Progr
 Projection: UTM Zone 13N
 Created by Megan Gernert, megan.gernert@state.co.us,
 Monday, February 12, 2018

Attachment A