



Contact: Lindsey Sterling Krank
lsterlingkrank@humanesociety.org
Re: Timeline of Cross County Relocation Denials

2002-2006 City of Westminster Staff Report

"Since 2002 the Jefferson County Board of Commissioners has refused to grant cross-county permits to the City of Westminster even though the City owns open space in Jefferson County."

2006 Elbert County Commissioner Meeting

A private landowner requested permission from the County to establish a prairie dog preserve on his/ her private land. The Board agreed not to take any action on this request and instructed the city attorney to write a letter indicating the same.

2008 Baca County Commissioners

BOCC voted no on a private landowner's request to relocate prairie dogs onto his/her private land in return for an incentive payment to the landowner, a County grant, conservation easement and long term conservation plan. The County Commissioners did not approve of the relocation.

2009 Weld County Commissioners

In 2009, in order to stay in compliance with the FDA, the City of Longmont requested permission to transfer prairie dogs from the Airport to open space the city owns in Weld County. They furthermore stated they will also not approve –intra-county relocations either.

2010 Prowers County Commissioners

The City of Boulder came to Prowers County to see if they would "repatriate" a colony of prairie dogs that were in the way of a planned development in Boulder. Prowers declined the financial offer and the Commissioners spoke about the law allowing county commissioners to approve any plan for moving prairie dogs into the county and the challenges of managing this annoying animal.

2012 Elbert County Commissioners

Producer Dale Lasater & Roe Ecological Services asked the BOCC if there were any comments or public input regarding the proposed reintroduction of prairie dogs on the Lasater Ranch. There was none. There was also no action taken on the part of the BOCC, which means that the Lasater Ranch reintroduction of prairie dogs was not even considered.

2012 Elbert County Commissioners

Developer, wildlife manager and landowner approached the Commission for approval of a cross county relocation onto private ranch. After 6 months of no action by the Board; the issue died due to a lack of motion.

2013 Adams County Commissioners

After four months (Oct 2013-February 2014) of repeated requests to be put on the agenda and request permission for one surviving prairie dog to be moved from the town of Parker to private land in Adams County, the County Manager stated, "the BOCC is not wanting to move forward with a resolution to vote on and address this issue...I do not have a majority of the Board of County Commissioners that is interested in addressing this issue."

###



WESTMINSTER

Staff Report

City Council Study Session Meeting
January 30, 2006



SUBJECT: Prairie Dog Management Policy Update

PREPARED BY: Richard Dahl, Park Services Manager

Recommended City Council Action:

Review the following staff report that outlines the process the Department of Parks, Recreation and Libraries uses to manage the prairie dog populations on City-owned properties. Staff will attend the Study Session to make a presentation regarding this policy, provide additional information, and will be available to answer questions.

Summary Statement:

- On February 11, 2002, City Council adopted Resolution No. 8 re: Prairie Dog Management on City Property (attached), which outlines the process under which prairie dogs will be managed within the City of Westminster.
- Over the last 10 years, the City has relocated approximately 1,500 prairie dogs to various City Open Space lands.
- ~~Currently, there are no prairie dog relocation sites available in Adams County or on City-owned property in Jefferson County.~~
- Colorado State Law defines prairie dogs as small game and destructive rodent pests.
- Colorado State Law prohibits the transport and release of prairie dogs between counties unless the board of county commissioners of such county approves, by resolution, the cross-county transfer.
- For the past three years, Jefferson County has not approved any requests for cross-county prairie dog relocations.
- Between July 2003 and September 2005, the Parks, Recreation and Libraries Department completed three separate prairie dog extermination measures due to concerns for public health and safety, environmental impacts, and the unavailability of suitable relocation sites.
- In July 2004, the City commissioned a prairie dog impact study conducted by ROE Ecological Services, LLC, a wildlife biologist consulting firm, to survey and make recommendations regarding the prairie dog population on City-owned properties in Westminster.
- Between October 2001 and December 2005, the Department of Parks, Recreation and Libraries expended \$183,870 on prairie dog management measures.

Expenditure Required: \$ 0

Source of Funds: N/A

Policy Issue

Does City Council wish to continue with the existing Prairie Dog Management Policy as outlined in Resolution NO. 8 Prairie Dog Management on City Property.

Alternatives

1. City Council could direct staff to modify the existing management policy.
2. City Council could direct staff to draft a new prairie dog management policy.
3. City Council could choose to not allow any management or control of prairie dogs on City property.

Background Information

Resolution NO. 8 gives authority for prairie dog management on City-owned lands to the Department of Parks, Recreation and Libraries (PR&L) and “to work toward a balanced wildlife environment on City Open Space property where wildlife habitat is preserved and enhanced for predator and prey alike.” Although the Department of PR&L always looks at relocation as its first option, it is also given the authority under Resolution NO. 8 to “consider other alternatives to prairie dog relocation if relocation is 1) not fiscally reasonable, 2) not environmentally sound, 3) not timely to achieve, or 4) if it poses a health threat.”

For the past several years, the Department of PR&L has observed an increasing prairie dog population and management problem on both developed and undeveloped park sites and on some Open Space properties. Relocation has been complicated by the lack of prairie dog relocation sites in Adams County and a State Regulation that does not permit cross-county relocation without permission of the affected County Commissioners. Since 2002 the Jefferson County Board of Commissioners has refused to grant cross-county permits to the City of Westminster even though the City owns open space in Jefferson County.

Due to health and safety issues for adjacent property owners and environmental degradation of City-owned park and Open Space land, Staff has been forced to reduce the expanding prairie dog populations at the following properties:

- Windsor Park (2003)
- Cobblestone Park (2004)
- Westfield Village-new park construction (2005)
- Waverly Acres Park/Hyland Ponds Open Space (2005)

Control measures at Windsor Park and Waverly Acres were done at the request of homeowners who were fearful of potential plague outbreaks, as well as prairie dogs invading their yards and concerned over the damage being done to the landscaping of the parks. These control measures were done only after all viable options for relocation, as outlined in Resolution NO. 8, had been explored.

Since 2001, the Department of PRL has expended \$183,870 on the following prairie dog management programs and projects including the following:

- \$32,166 - Prairie dog fencing and visual barriers
- \$24,329 - Prairie dog relocation
- \$11,700 - Prairie dog extermination
- \$14,543 - Prairie dog management study (ROE Ecological Services)

The Westfield Village Park located at 1150 Wolff Street, which is nearing completion, had the following prairie dog management costs:

- \$37,580 - Prairie dog capture, euthanize and transfer to the Raptor Program in Ft. Collins
- \$ 8,046 - Prairie dog visual barrier
- \$ 364 - Prairie dog extermination
- \$53,872 - Cost to construct barriers including below-ground netting, visual block fencing, tall shrubbery, wetlands and related infrastructure to keep the prairie dogs from invading Westfield Village Park from the adjacent Community College Open Space.

Parks, Recreation and Library Staff continue to follow Resolution No. 8, as adopted by Council on February 11, 2002, (attached). In addition, the consulting firm, Roe Ecological Services, LLC has been hired to provide scientific wildlife management recommendations for all of the properties currently under the stewardship of the Department of Parks, Recreation and Libraries.

Respectfully submitted,

J. Brent McFall
City Manager

Attachment

**ELBERT COUNTY COMMISSIONER MEETING
SEPTEMBER 20, 2006**

The Board of Elbert County Commissioners met in a regular scheduled meeting on the 20th day of September 2006, with the roll call of members as follows:

Chairperson Suzie Graeff	Present
Vice Chair Stephen Stutz	Present
Commissioner John Metli	Present

The Board of Commissioners convened at 9:15 a.m., and Chairperson Suzie Graeff called the meeting to order. The meeting began with a Prayer and the Pledge of Allegiance.

AGENDA:

Additions: Agate Rezone and Prairie Dog Relocation Request. Commissioner Stutz made a motion to accept the Agenda for September 20, 2006, as amended. Commissioner Metli seconded the motion. The roll having been called, the Chair declared the motion unanimously carried and so ordered.

CORRESPONDENCE:

Letter from Jerry Koch regarding the 1041 Regulation Amendments being considered by the County.

Buy Colorado Magazine.

Schedule of Pipeline Safety Programs put out by Common Ground Alliance.

Eastern Colorado Resource Conservation and Development annual meeting and dinner on October 17th in Hugo at the VFW Hall.

MVEA Meeting on October 19, 2006 at St. Mary's Hall in Calhan.

Thank you letter from CCI for the donation for the livestock sale at the State Fair.

MINUTES APPROVED:

Commissioner Metli made a motion to approve Commissioner Meeting Minutes of September 13, 2006, as written. Commissioner Stutz seconded the motion. The roll having been called, the Chair declared the motion unanimously carried and so ordered.

Commissioner Stutz made a motion to correct the Commissioner Meeting Minutes of August 16, 2006, under the OEM Capital Budget Outlay from 2007 budget to 2006 budget. Commissioner Metli seconded the motion. The roll having been called, the Chair declared the motion unanimously carried and so ordered.

considered acceptable. Further, this proposal is located in the Economic Development Area which is designated as an area appropriate for industrial development .

Anadarko E&P Company is the subsurface rights holder and they have objected to approval of this project unless the applicants enter into an agreement regarding surface use are reached. Anadarko notified the applicant that they would like an agreement and \$48,000 to purchase their rights for hard rock mining.

Public Comment Speakers: Applicant's Representative Keith Westfall; Applicant's Attorney Jack Reutzel; Applicant Paul Naftel; Anadarko's Attorney Molly _____; Tom Maroney.

Commissioner Metli made a motion to approve RZ-05-12-32, Kiowa Creek Estates A-1 Rezone, with the 14 conditions of approval; amending condition #2 to delete the third bullet point; and amend condition #6 to remove the first three sentences. Commissioner Stutz seconded the motion. The roll having been called, the Chair declared the motion unanimously carried and so ordered.

**RESOLUTION 06-82
APPROVAL OF KIOWA CREEK ESTATES A-1 REZONE**

2006 PROPERTY ASSESSMENT:

Assessor Laura Forbes came before the Board to present the 2006 Property Assessment for Elbert County and reported that the valuations of property in Elbert County are found to be in compliance. The property assessment study was completed by Rocky Mountain Valuation Specialists.

Commissioner Stutz made a motion to accept the 2006 Property Assessment Study as presented by the Elbert County Assessor. Commissioner Metli seconded the motion. The roll having been called, the Chair declared the motion unanimously carried and so ordered.

COUNTY ATTORNEY:

County Attorney Mark Scheffel came before the Board to discuss the proposal to the Board of Commissioners for the location of a prairie dog preserve in Elbert County. The Board agreed not to take any action on this request and instructed Mark to write a letter indicating the same.

PUBLIC COMMENT:

Don Gregory and Mike LaSalers came before the Board to ask if there has been any action taken on the code violation of Xpress Compost. County Attorney Mark Scheffel reported that the legal process has been started on this matter and that since it is a legal matter no details can be discussed.



OFFICE OF BOARD OF COMMISSIONERS
PHONE: 970-336-7204
FAX: 970-352-0242
915 10TH STREET
P.O. BOX 758
GREELEY, COLORADO 80632

July 7, 2009

Roger Lange, Mayor
City of Longmont
350 Kimbark Street
Longmont, CO 80501

Re: Proposed Transfer of Prairie Dogs into Weld County

Dear Mayor Lange:

On Monday, July 6, 2009, the Board of County Commissioners of Weld County, Colorado, had the opportunity to discuss the City of Longmont's proposal to transfer prairie dogs from the Vance Brand Municipal Airport in Boulder County to property located in Weld County.

CRS § 35-7-203(2) defines prairie dogs as "destructive rodent pests." With that definition in mind, all of the Commissioners are opposed to allowing prairie dogs to be transferred into Weld County. Additionally, the Board will not approve "intra-county" transfers of prairie dogs when asked by the Colorado Division of Wildlife.

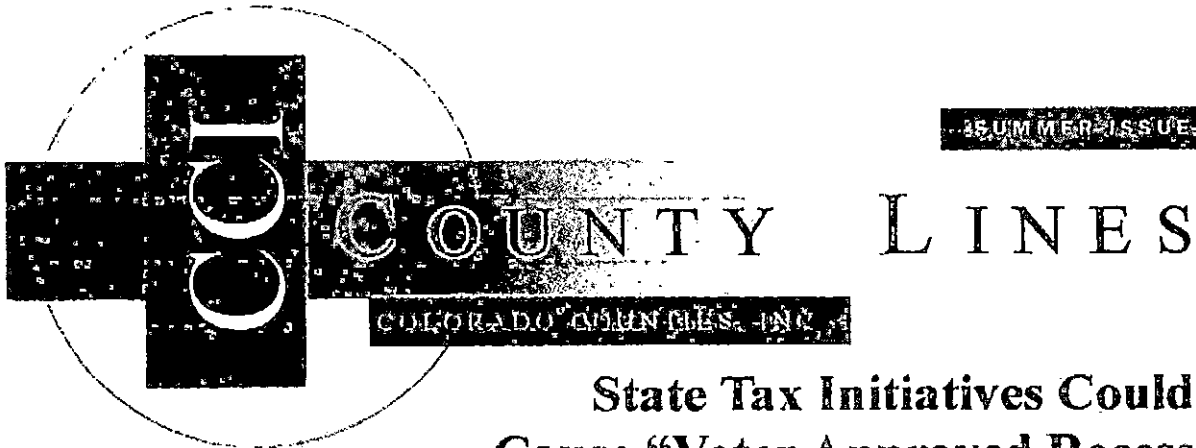
No Weld County Commissioner is willing to introduce a Resolution to allow the City of Longmont to transfer prairie dogs from Boulder County into Weld County, pursuant to CRS § 35-7-203(1).

Please feel free to call me if you wish to discuss this matter further. I may be reached at (970) 356-4000, ext. 4390.

Sincerely,

William F. Garcia, Chairman
Board of County Commissioners
of Weld County, Colorado

pc: Bruce T. Barker, Weld County Attorney



State Tax Initiatives Could Cause "Voter Approved Recession"



On November 2, 2010, voters across the state will have their say on three initiatives that will dramatically effect the operation of the state and local governments in Colorado. Henry Sobanet, former head of the Office of State Planning and Budgeting under the Owens Administration, and Rick Reiter, a campaign consultant, joined commissioners at CCI's Summer Conference to share their preliminary analysis of impacts of the three initiatives and an update on the campaign against the measures.

Mr. Sobanet began by touting the long tradition of local decision making that Colorado voters have enjoyed over the years. Decisions to tax and expand services are locally made and reflect the priorities and desires of communities throughout the state. If Proposition 101 and Amendments 60 & 61 pass in November, local decisions will become null and void.

While this argument will certainly appeal to some voters, Mr. Sobanet also cited the fiscal impact of the measures to the public and private sector along with preliminary estimates on job losses. To date, Mr. Sobanet's analysis indicates that these measures could result in a current-year equivalent impact of \$4.2 billion. While these impacts would occur over time, this figure represents the potential full impact of the measures. He explained that while this revenue loss will have an immediate impact on the public sector, it will also impact the private sector which in many cases relies heavily on governmental contracts for business. Construction companies, private correctional services, and a variety of vendors will all be impacted. Finally, Mr. Sobanet stated that his early estimates indicate job losses of 50,000 or more. Collectively, these measures are tantamount to a "voter approved recession."

Based on early polling, Mr. Reiter explained that statewide voters do not care for Proposition 101 and Amendment 60 once they are explained. Forty percent of voters view these two measures as too complicated and riddled with tricky shenanigans.

Amendment 61, however, is a different story. Amendment 61 prohibits the state from using any sort of public financing whatsoever. Under Amendment 61, the state will no longer be able to use revenue bonds to build roads, revenue anticipation notes to help schools with their cash flow needs while they wait for property tax revenues to trickle in, or lease purchase agreements. And, while Amendment 61 does not prohibit local governments from using these types of public financing, local governments must secure voter approval prior to doing so. Amendment 61 also requires a 10 year maturity date for all borrowings and a decline in tax rates equal to the average annual repayment of the borrowing once it has been repaid.

Mr. Reiter explained that voters, both nationally and in Colorado, feel that government is spending too much money and is living beyond its resources. Voters are also not making a distinction between public financing and deficit spending. Given these two sentiments and the brevity of Amendment 61's ballot language, the public's approval rating of this measure is currently above 50%.

Before closing, Mr. Reiter said that conservative unaffiliated and moderate republican voters seem to like these measures the most. With this in mind, the campaign's message has to be center-right in its orientation. Mr. Reiter stated that commissioners are in the best position to argue against these measures in their respective communities. He suggested using local infrastructure - hospitals, community centers, roads and bridges - and how these local assets will be impacted, as a way to illustrate the negative ramifications of voting yes on these measures.

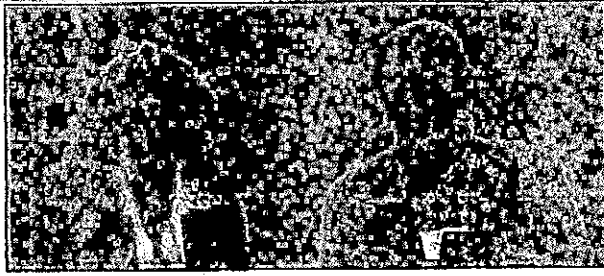
INSIDE THIS ISSUE:

HB10-1264	3
CCI 101	7
CONFERENCE PHOTOS	8
EMERGENCY FIRE FUND	11
UNFUNDED MANDATES	13
WATER & LAND USE	14

2010 Legislative Forms

Don't forget to turn in your 2011 Legislative forms to CCI by Friday, July 2, 2010.

This is your chance to participate in and shape CCI's Legislative Agenda for 2011. Please submit forms to reiter@ccionline.org by Friday, July 2nd.



Costilla County Commissioner Crestina Martinez and Baou County Commissioner Spike Ausimus listen to a presentation during the Southern District meeting.

Southern District

In the beginning of the first Southern District meeting of 2010, CSU Extension agent, Joel Plath, spoke to the Commissioners about the plans to update and expand the Extension's business model. The outreach efforts of past CSU Extension officers fell short of county commissioners' expectations. The new plans include working with county commissioners to align the needs of the counties with University's resources and to improve integration and cooperation to better serve counties. The Extension is planning to develop new regional areas to focus agent resources on the counties. There will be ongoing conversations with the Extension throughout the year as the plans continue to unfold.

Commissioner Sam Pace, Saguache County and Commissioner Crestina Martinez, Costilla County, presented an update on the ongoing conversations at the state level concerning Health and Human Services (HHS) centralization. Colorado counties continue to oppose the idea of administration efforts to centralize more HHS programs under the state umbrella. Commissioner Martinez told the group about county efforts to get letters, resolutions and public meetings set up to help educate administration officials and the general public.

Commissioners discussed issues that the counties are interested in for discussion at future District meetings, as well as information on issues discussed last year. Huerfano County spoke about the ongoing issue concerning Colorado Water Conservation Board (CWCB) notification process. While the CWCB still moves forward on proposed protections on seasonal streams in the county, their notification process for future hearings and public outreach has improved over the last year. Other counties echoed that CWCB has been better about notifying local governments about future water decisions.

Managing prairie dogs in rural Colorado continues to be an issue. The City of Boulder came to Prowers County to see if they would "repatiate" a colony of prairie dogs that were in the way of a planned development in Boulder. Prowers declined the financial offer and the Commissioners spoke about the law allowing county commissioners to approve any plan for moving prairie dogs into the county and the challenges of

managing this annoying animal.

Conejos County updated the group on their ongoing efforts to stop a railroad from offloading low grade hazardous material in the county. The railroad claims a preemption that allows them to transfer the hazardous waste from their rail cars to trucks which travel on to a Utah storage site. Conejos claims that the process is subject to the county's land use regulations and worries that prior safety issues, including a derailment on the rail line, portends possible accidents in the future.

Generally, rural counties discovered that the Census process was difficult to implement this year. The census is important to all areas of the state-rural areas rely on accurate numbers from the census as a gauge of the health of the county. Commissioners related stories of census workers having outdated maps, limited access to rural areas of the counties, lack of knowledge about the populations served and confusion about where to go to get replacement forms.

In conclusion, Andy Karsian, CCI, gave an update on a variety of legislative issues affecting rural counties. Issues included, conveyance inspections for specific smaller elevators in the counties, tax increment financing, and medical marijuana regulations.

Western District

Montrose County Commissioner Gary Ellis and La Plata County Commissioner Wally White were reelected as President and Vice President of the Western District.

CSU Extension Regional Director Nathan Moreng, outlined the reorganization of the Extension and announced that there will be a meeting probably in early September with county commissioners to discuss the reorganization and the future of Extension funding. CSU will either send out invitations to see who wants to participate and/or the August District meeting will select people to attend the meeting.

A budget survey was completed by 15 of 16 Western District counties. A summary of results can be found on page 10. Commissioners were impressed with several of the results:

- Budget teams who reviewed budget requests, budget change requests and reviewed weekly or monthly expenditures, filling vacant positions, and unanticipated expenses received the most discussion.
- Preparing multiple budgets in case revenue initiatives pass.
- Employee and public involvement proved vital for them to understand the county's fiscal predicament and they both provided insight and suggestions to reduce expenditures.
- Planning and prioritizing what are essential government services proved to be extraordinary to counties. Several counties are utilizing "budgeting for results"

Timeline of Efforts to Relocate Prairie Dogs at Naropa

Below is a timeline of Naropa University's efforts to work with the City and County of Boulder, landowners in neighboring counties, and interested partners to find viable relocation alternatives for the prairie dog population at its Nalanda Campus.

The relocation of prairie dogs is fundamentally a community issue, and not one that private landowners can address alone. For more than four years, Naropa has sought greater assistance from the City of Boulder, and has also pursued every viable location alternative, to no effect. Thus far we have spent more than \$100,000 on these efforts and invested hundreds of hours of staff time in order to find a relocation solution.

If a viable relocation site is identified, Naropa has committed to pursuing this option, and will bear the considerable costs associated with the relocation. The best available information at this point is that relocation costs around 10x more than eradication.

We strongly encourage interested parties to call the Boulder City Manager (303-441-4020) and the Boulder County Commissioners (303-441-3500) to urge the City and County of Boulder to do more to identify and set aside land for the relocation of prairie dogs.

2004

- Naropa University purchases the Nalanda Campus at 63rd and Arapahoe and moves classes and administrative offices to the site. No prairie dog population exists on the Nalanda Campus at this time.

2006

- Two years after Naropa purchases the Nalanda Campus, prairie dogs are first documented on the Nalanda campus; size of population estimated at approximately 50 prairie dogs. No action taken by Naropa at that time.

2010

- At the request of then-Vice President for Operations, the impact of the colony on the Nalanda campus is investigated. The size of the colony is estimated to have grown to 150-200 prairie dogs.
- Naropa's Board of Trustees commissions a structural engineering firm, Scott, Cox & Associates Inc., to determine scope of the structural damage caused or which could be expected to be caused by the prairie dog population. The study finds that prolonged pressure and expansion of the colony could potentially have

detrimental effects on the structural integrity of the existing building and on future developments on the property.

2011

- Following a second assessment by Smith Environmental, Naropa University contacts the City of Boulder to determine viable relocation sites in Boulder County. The City does not identify any relocation sites in the County.
- Naropa identifies a potential relocation site in Elbert County. Naropa contracts Roe Environmental Services to assist in the relocation process, including permissions for cross-county relocations

2012

- For more than six months, Naropa negotiates with owners of the potential relocation site in Elbert County. In June of 2012, the issue was first brought to the County Commissioners in Elbert County; the commissioners tabled the request.
- In July of 2012, the Elbert County Commissioners had the request brought before them again. Although there was no public opposition, the Commissioners once again tabled the motion and indicated it could not be reviewed again until after November, since there was an election coming up.
- In November of 2012, the owners of the site in Elbert County formally notified Naropa that they were unable to proceed with the relocation plan.

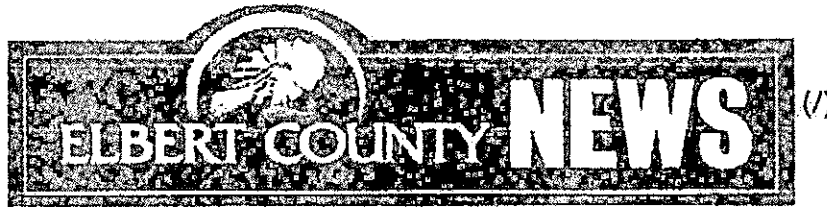
2013-2014

- Throughout 2013, Naropa continues to work with Roe Environmental Services and the Urban Wildlife Conservation Coordinator for the City of Boulder in an attempt to identify other suitable options for relocation. Additional options under consideration at this time include fencing options and other forms of containment. After investigation, it is determined by the City that none of those options would truly contain the colony or address the concerns raised.
- Chief Financial Officer Todd Kilburn meets with the Urban Wildlife Conservation Coordinator for the City of Boulder, the Prairie Dog Coalition, and other environmental firms and animal welfare specialists in hope of finding a relocation site.

- In September 2014, Naropa University places public notices and contacts public officials in support of assistance in identifying suitable relocation sites, including the following communities:
 - City of Boulder
 - City of Lafayette
 - City of Longmont
 - City of Louisville
 - Town of Erie
 - Town of Superior
 - Boulder County

2015

- With no real solution identified from local government or community partners, Naropa University submits an application to the City of Boulder for the removal of prairie dogs. Crucially, the application includes an Open Comment period, which is designed to provide a forum to identify feasible relocation alternatives. Further, when issued the permit is good for 18 months, adding more time to accomplish the relocation goal.
- Naropa is hopeful that the open application process will identify a relocation option it has yet been unable to identify.

[NEWS \(/NEWS/\)](#)[SPORTS \(/SPORTS/\)](#)[LIFE \(/LIFE/\)](#)[OPINION \(/OPINION/\)](#)

Prairie dog relocation goes nowhere

Posted Saturday, June 23, 2012 2:23 pm

Deborah Grigsby (dgrigsby@ourcoloradonews.com)

Cattleman Dale Lasater, along with the assistance of wildlife experts, asked Elbert County for permission to relocate a population of up to 300 black-tailed prairie dogs to his ranch near Matheson.

But opposition from residents as well as the Farm Bureau and Cattlemen's Association has left the project a bust, said Elbert County Commissioner Kurt Schlegel.

"I told them at the June 13 BOCC meeting that it was an interesting project," Schlegel explained. "However, we felt there just wasn't enough information at the time to make an informed decision, so the issue died due to lack of a motion."

In the proposal, Lasater sought county approval to re-establish prairie dogs on his ranch in hopes to encourage the nesting of hawks, owls and mountain plover, as well as provide additional forage for the swift fox.

According to the request, Elbert County has few prairie dogs within its borders, making it difficult to find a source population within the county, so the animals would have been imported from a property somewhere along the Front Range.

Colorado law prohibits the release of prairie dogs in a different county from where they are captured without approval from the receiving county.

The Lasater Ranch is a working cattle ranch that currently occupies more than 14,000 acres within the county.

During the summer of 2005, a similar re-establishment project was conducted on the property.

Roe biologists monitored the initial 10-acre colony for five years. According to the proposal, the colony expanded "to a very healthy, low-density 150 to 200 acres."

Vegetation remained healthy and Western burrowing owls were observed nesting and utilizing the prairie dog colony, as early as a year after re-establishment.

The request also stated that only healthy prairie dogs would have been relocated to the new colony in an effort to curtail disease.

Lasater declined comment on the matter.

Schlegel said Lasater has the option to re-apply for permission at a later date.

Tweet Share < 1 Share

Comments

NO COMMENTS ON THIS STORY | PLEASE LOG IN TO COMMENT BY CLICKING HERE (/LOGIN.HTML)



HOOKING UP WITH THE SECOND CITY

CLICK HERE FOR TICKETS OR CALL 303.805.6800

PAGE
Feb. 20
7:30 p.m.

(http://ccm.ads.communityq.com/www/delivery/ck.php?oaparams=2_bannerid=875_zoneid=32_cb=eedc842e8b_oadest=https%3A%2F%2Fparkerarts.ticketforce.com%2Feventperformances.asp%3Fevt%3D346)

THE LATEST

News (/news/)



Large Crowd Moves BOCC Meeting Exhibit Hall Koch Blasts Rowland With Daytime Soap Analogies

by William C. Thomas

The Elbert County Board of County Commissioners, (BOCC), convened in the County Building at 9:00 on July 25, 2012, then reconvened in the Exhibit Hall on the County Fairgrounds an hour later because the number of spectators exceeded the amount of space available.

The majority of spectators had come for a presentation by Dr. Jerry Koch, head of the Water Task Force (WTF) and Harvard Graduate, who spent the first fifteen minutes comparing proceedings of the WTF meetings with emails issued by Commissioner Candidate Robert Rowland. Koch pointed out alleged inaccuracies in the emails versus what went on during the WTF meetings, drawing from analogies of daytime soap operas and the Johnson for President Campaign of 1964 for comparison. His rant was stopped by several spectators who demanded that he talk about water.

Commissioner Schwab then called for a break in proceedings while Dr. Koch gathered his thoughts.

Upon resuming, Dr. Koch explained that he'd "gathered information" last summer when the Amendment 3 Pipeline application came before the BOCC, and shared his findings with Commissioners Shipper and Schwab, but never told either of them "how to vote" on the issue.

When asked to be part of an advisory board on water, Koch pushed for a "Water Task Force of highly specialized professionals," which he has headed since January, 2012. Members of the WTF, he continued, can present information on a variety of topics concerning water. The Water Master Plan is possible in the "near future," he continued, then summed up by saying that the WTF would meet at an undisclosed place, time, and date to determine "the nature of our relationship" with Elbert County.

Other business included the awarding of \$250.00 to the 4-H Shooting Sports Program from Nextera Energy through the Sheriff's Department. Sheriff Shayne Heap was presented the check by Craigh Curl, head of the Elbert County Enterprise Authority, (ECEA).

County Fair Queen Rebecca Seward formally invited the Commissioners to attend the Elbert County Fair, and Extension Agent Sheila Kelly noted that this year, from Tuesday-Friday, July 31-August 3, there will be a "Dinner Special." For \$6.50/person, community members can tour the Fair and see the remarkable creativity and care taken by the County's almost 500 4-H participants, with dinner: choice of baked chicken or lasagna, provided.

Treasurer Rick Pettitt reported that foreclosures for the second quarter were up 17% from this time last year, with 121 new foreclosures started; 48 gone to sale and 50 withdrawn.

Debby Conrad of the Outback Express, presented specifications for a new vehicle, asking for electric door openers, decals, new bumpers and tires, noting that the cost, with Federal grants, would be \$12,911.50, which Outback Express has already collected from "special trips" at \$.25 a mile. The new vehicle, based in Simla, would cost the taxpayers of Elbert County nothing.

Craig Curl, ECEA Director, was the recipient of a Memorandum of Understanding with the BOCC, whereby he could distribute County funds to promote "new jobs in the community." Curl also reported to the BOCC that he was working on the Centennial Barbecue, where the Courthouse, built in 1912, would be re-dedicated on September 29, 2012. In 1912, the Barbecue celebrating the event featured barbecued swine, sheep, beef, and bear. Curl will have no problem obtaining the first three from the 4-H Market Sale at the County Fair; "but finding a bear is a problem."

Mark Shively, a member of the Douglas County Water Authority, asked for a BOCC resolution supporting the Chatfield Reservoir Re-Allocation Project, whereby the reservoir will have additional water storage for its users.

Possibly the only presenter at the BOCC meeting who did not receive accolades or commendation or contracts was Dale Lasater and Roe Ecological Services. A spokesperson for Roe Ecological asked the BOCC if there were any comments or public input regarding the reintroduction of prairie dogs on the Lasater Ranch. There was none. There was also no action taken on the part of the BOCC, which means that the Lasater Ranch reintroduction of prairie dogs was not even considered.



From: Todd Leopold [mailto:TLeopold@adcogov.org]
Sent: Monday, February 03, 2014 12:59 PM
To: Ghia Speakman
Cc: Jacquelyn Pyun
Subject: Re: Parker Prairie Dog Permit

Ghia,

I just spoke with the Commissioners this morning and they did receive the email from the daughter of the property. They have reviewed all the information that has been provided up to this point. The commissioners are not wanting to move forward with a resolution to vote on and address this issue.

Todd Leopold
County Manager
Adams County, Colorado

On Feb 3, 2014, at 8:21 AM, "Ghia Speakman"
<gspeakman@humanesociety.org<mailto:gspeakman@humanesociety.org>> wrote:
Hi Todd,

I spoke with Karen last week and she informed me that she did finally speak with you and then sent in a letter of "approval" for the relocation. Can you give us an update on when your commissioners might come to a resolution? Thank you,

Ghia Speakman
Program Manager & Wildlife Biologist
Prairie Dog Coalition of The Humane Society of the United States
303-253-4765

Lindsey Sterling-Krank

From: Ghia Speakman <gspeakman@humanesociety.org>
Sent: Monday, February 03, 2014 5:35 PM
To: Lindsey Sterling-Krank
Subject: Fwd: Parker Prairie Dog Permit

Fyi.

Ghia
Sent from my iPhone

Begin forwarded message:

From: Todd Leopold <TLeopold@adcogov.org<<mailto:TLeopold@adcogov.org>>>
Date: February 3, 2014 at 4:26:30 PM MST
To: 'Ghia Speakman' <gspeakman@humanesociety.org<<mailto:gspeakman@humanesociety.org>>>
Cc: 'Jacquelyn Pyun' <jpyun@humanesociety.org<<mailto:jpyun@humanesociety.org>>>
Subject: RE: Parker Prairie Dog Permit

Ghia,

I understand your position; however, I do not have a majority of the Board of County Commissioners that is interested in addressing this issue. They would like to see if the Douglas County Board of County Commissioners could identify a property in their own county to relocate the prairie dog.

Todd Leopold | County Manager | 4430 South Adams County Parkway | Brighton, CO 80601-8208 | Office: 720.523.6864
| TLeopold@adcogov.org<<mailto:Mgoins@adcogov.org>>

From: Ghia Speakman [<mailto:gspeakman@humanesociety.org>]
Sent: Monday, February 03, 2014 2:01 PM
To: Todd Leopold
Cc: Jacquelyn Pyun
Subject: RE: Parker Prairie Dog Permit

Hi Todd,

Would you be able to give us an explanation for this stance? Originally, Commissioner Erik Hansen had no problem with this permit. We have provided you with all the information requested, and added assurance from the receiving site land owner. And again, we are dealing with only 1 prairie dog.

Thank you,

Ghia Speakman
Program Manager & Wildlife Biologist
Prairie Dog Coalition of The Humane Society of the United States
303-253-4765